



SECURITY AND INFRASTRUCTURE SOLUTIONS

Enterprise Level

Purple Arrow Consultancy Services P Ltd

info@purplearrow-cs.com

www.purplearrow-cs.com



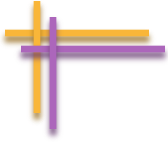
ABOUT COMPANY

- PURPLE ARROW CONSULTANCY SERVICES (PACS) is engaged in the field of electronics security, infrastructure solutions and software development.
- PACS's security solution for businesses, retailers and homes include access control systems, electronic identification tags and video surveillance systems to deter theft, protect people and improve business performance. Making user experience simple and yet effective
- Security has always been a way-side of concern for the enterprise sector and one of the primary spaces that enterprises constantly keep a note is on the software side. The intention is to provide ability to view all critical security and events in one station on one screen. To provide flexible customized and integrated solutions allowing security personnel to view all critical events, including access violations, video, intrusion and fire alarms, from one centralized station.



SECURITY AND INFRASTRUCTURE SOLUTIONS

- ◉ We envisage that the ID based solutions on LF, HF, UHF and NFC can help organizations track, manage and control people and assets, both movable and immovable across industry verticals like- Healthcare, Hospitality, Education, Transportation, Government, and Defence etc
- ◉ PACS offers an integrated security management solution for public safety, security and surveillance. This solution provides comprehensive management ability. Different products deployed for SMS have to work as on system and controlled from the Central Command Centre for
 - • Homeland Security
 - • Events Security
 - • Large Multi location Corporate
 - • Campus Security



SECURITY AND INFRASTRUCTURE SOLUTIONS
Enterprise Level System

PURPLE ARROW
SECURITY MANAGEMENT SUITE
(PA SMS)



ENTERPRISE SECURITY SYSTEM

- Prime objective of implementing an Access Control System can be defined as to “Enhance Security and Safety of company work centers through integrated IT enabled Access Control and Surveillance solutions”
- Geographically spread locations can be connected over WAN link. The ACS application shall be deployed at various sites, such that the sites shall be converged to their respective regional Cluster. All the cluster sites shall be then converged to the Central site, with the advance feature of Disaster Recovery site.

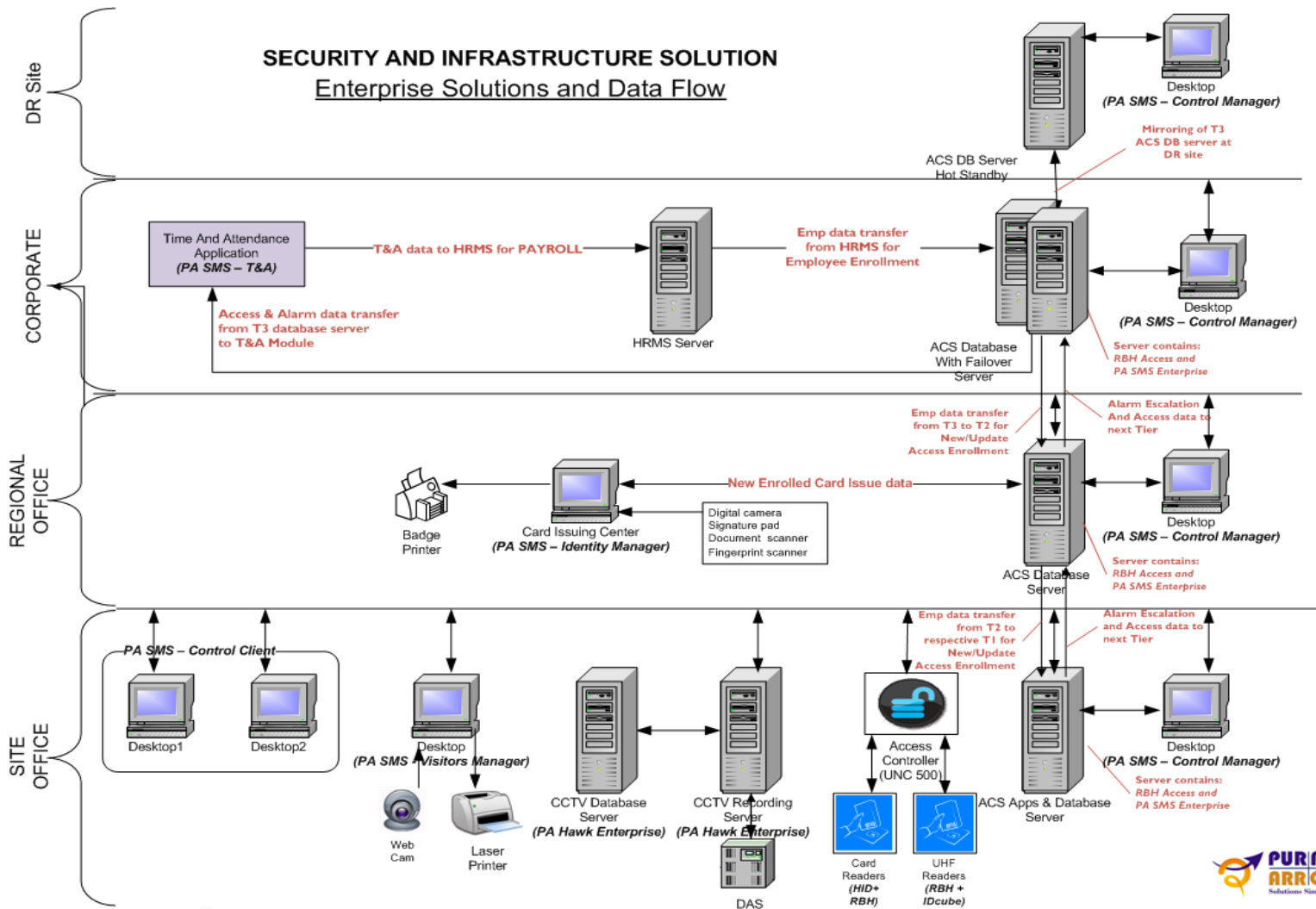


PURPLE ARROW SECURITY MANAGEMENT SUITE (PA SMS)

- Purple Arrow solution presents Security Management Suite that contains a range of modules that are integrated and provides a open and seamless platform even at multi-tier enterprise level. The modules include:
 - PA SMS Control Manager
 - PA SMS Hawk VMS
 - PA SMS Time & Attendance
 - PA SMS Visitor Manager
 - PA SMS Identity Manager
 - PA SMS Biometric De-duplication
 - PA SMS Diagnostics
 - Custom Application for Integration with existing systems



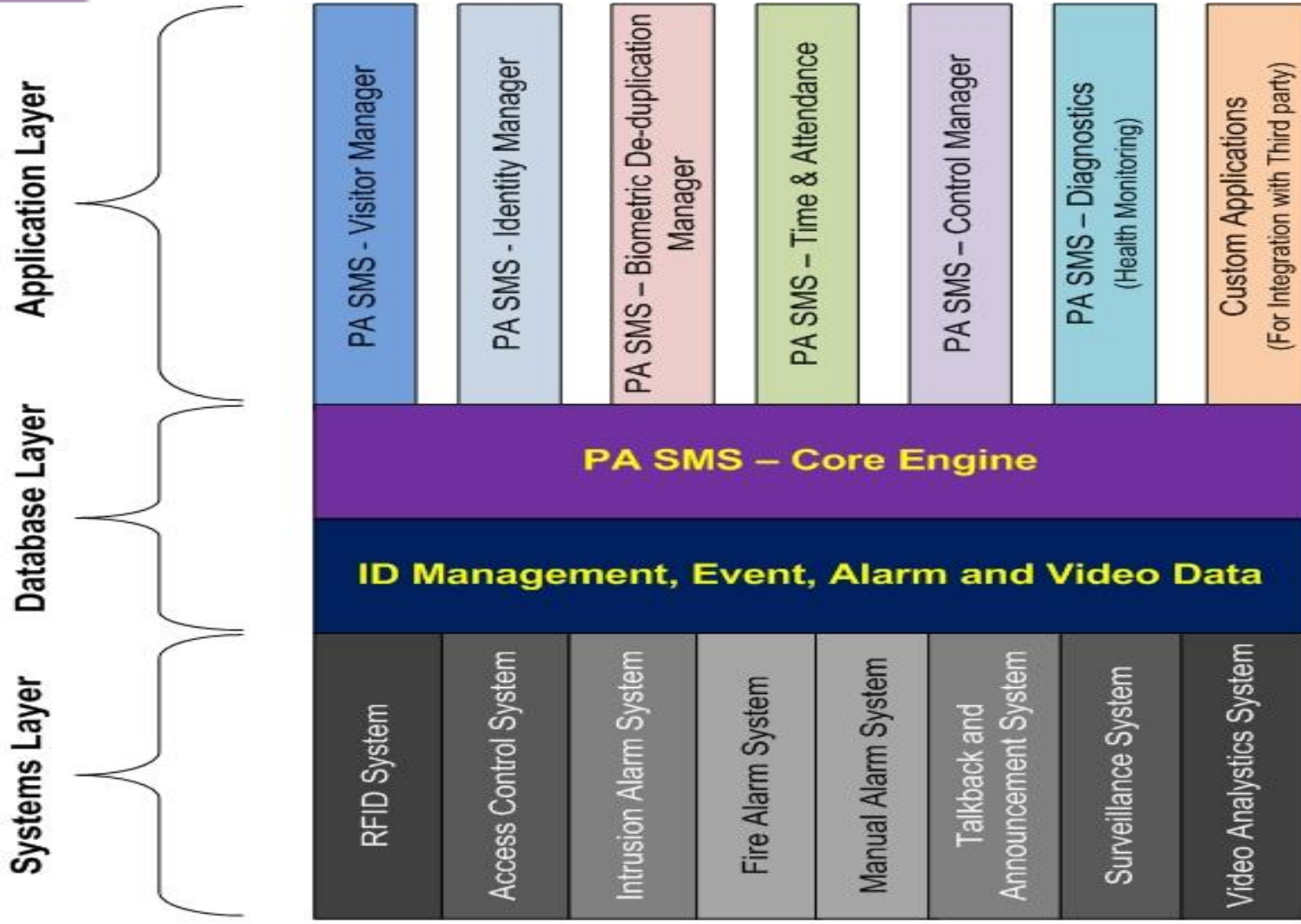
SAMPLE ENTERPRISE SOLUTION





Purple Arrow Security Management Suite

ARCHITECTURE



PurpleArrow Security Management Suite (PA SMS) Architecture



LAYER DESCRIPTION

- ◉ **Systems Layer** - System Layer can be one location or multi location, depending on organisational structure and requirement. These systems can be of different makes or types but ready to share data. This layer is highly flexible and custom developed to support customer's existing infrastructure investments.
- ◉ **Database Layer** - The database layer architecture is critical as the data can be local, central or in multi tier while managing requirements of Redundancy and Disaster Recovery.
All Events, and Alarms raised at the System Layer are collated and structured to support the Application Layer.
This layer also takes into consideration matters related to Identity including de-duplication and other centralized control activities and update back the System layer.
- ◉ **Application Layer** - A broad variety of functional requirement is covered catering to security and infrastructure management. This layer sits over the database layer in client server architecture and based on customer requirement can be on single or multi locations.



SYSTEM LAYER

There can be different components to this layer as per user requirement

- CCTV systems (DVR,HDVR,NVMS)
- CCTV integration
- Biometric Integration
- Access Control
- Parking Control
- Elevator Control
- RFID readers and tags (Active/ Passive)
- Intruder Detection
- Environmental Sensors
- Security Sensors
- Fire alarm system
- Panic switch
- Emergency talk back and announcement units
- Parametric Fence or Detection system
- Fire suppression system
- Security lighting etc



DATA LAYER - PA SMS - CORE ENGINE

- ◉ Integration of multiple IT Infrastructure and Security Products
 - Integration with RBH Access
 - Integration with Video Management Solution
- ◉ Integrated Alarm Management
- ◉ Integrated Access details from different Database
- ◉ Support Multi Tier
 - Migrating Events/Alarms/Employee Details across Tiers
- ◉ Purging data as configured.
 - Access Control Data
 - Video Data and Files



APPLICATION LAYER - PA SMS - CONTROL MANAGER

Key Features include:-

- For Enrolment and Deletion - privilege use
 - Employee/Temporary Contracts
- For Inter Unit Transfer - privilege use at each Tier
- For Reports and Views based on each Tiers
- For Alarm escalation and management
- For Viewing of CCTV Features
(Full Integration with PA HAWK)

- More applications...



PA SMS - IDENTITY MANAGER

Following functions are performed:

- Badge Preparation for new Enrolled
 - Biometric Integration
 - Digital camera Integration
 - Signature pad Integration
 - Document Scanner
- Badge Printing



PA SMS - VISITORS MANAGER

Key Features include:-

- ◉ Web based Solution
- ◉ Online request for visit
- ◉ Request Acceptance of visit
- ◉ Security Office Visitor Manager input, process and close
 - Digital photos of visitors.
 - Signature recording
 - Visitor Material
 - Badge Printing
- ◉ Reception Verification
- ◉ Blacklist of Company and Personal
- ◉ Reports



PA SMS - TIME AND ATTENDANCE

- ◉ Time and Attendance Module will integrate Access Control Database with existing HRMS and works as a bridge to process attendance related employee data.
- ◉ TAMS will generate region/ location specific consolidated report for each employee on monthly basis, provides details on number of days 'Present' (including working hours in each day), On Travel or Out Of Office days, Leave and absent details.
- ◉ HR Management can use this data for further processing for the generation of different types of reports, and to send email notifications to concerned employee for the concerns related to attendance.



PURPLE ARROW DIAGNOSTICS

- PA Diagnostics is a Health Monitoring Application that caters to Multiple IT Infrastructure and Physical Security Products.
- This product also manages the defect reporting, resolution and escalations in multi tier environment.
- The Ticketing and Escalation System can create, update, and resolve reported Fault Alarms.
- Reporting and Email notification
- This will be helpful during maintenance or AMC period.



ASSET TRACKING SYSTEM

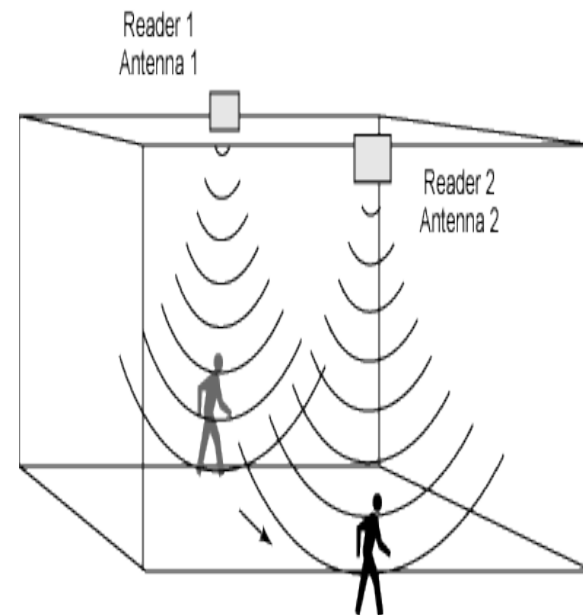
- Asset Tracking system operates by detecting the tag attached to an asset and requiring the use of a card or another security credential to authorize the removal of this item from the premises. If owner and asset do not match, system can notify authorities of an attempted action and if needed to lock down doors to prevent an unauthorized asset movement.
 - *Real-time operation, works with PC down*
 - *Live location status, owner and asset image display*
 - *Multi Asset Tracking is also Possible*





TRACKING SYSTEM

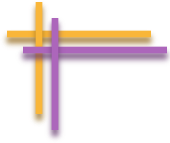
- Required in large organization and in some security prone areas
 - People Tracking
 - Vehicle Tracking
 - Vehicle/People tracking
 - Animal Tracking
- A well defined integrated procedure to track people in small or large area.
- Generate tracking report. Reports of history of any event.
- Vehicle Tracking is another interesting system especially, school bus tracker along with Student/Staff on Bus tracking Solution is of immense use for educational institutes.
- The concept is based on Smart Active RFID+GPS+GPRS





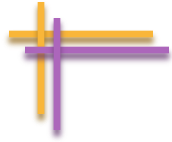
LIBRARY MANAGEMENT

- ◉ RFID Based Library Management System
- ◉ Issue and Tracking of Books
- ◉ Alarm for non issued books taken outside library
- ◉ User-friendly application interface.
- ◉ Staff as well as student record is maintained
- ◉ Newspapers attendance is maintained
- ◉ Automatic fine fees calculation
- ◉ Keeps record of supplier's and binder's
- ◉ Customized Report designing
- ◉ Configurable as per user's requirements



Purple Arrow Security Management Suite

PRODUCT OFFERING



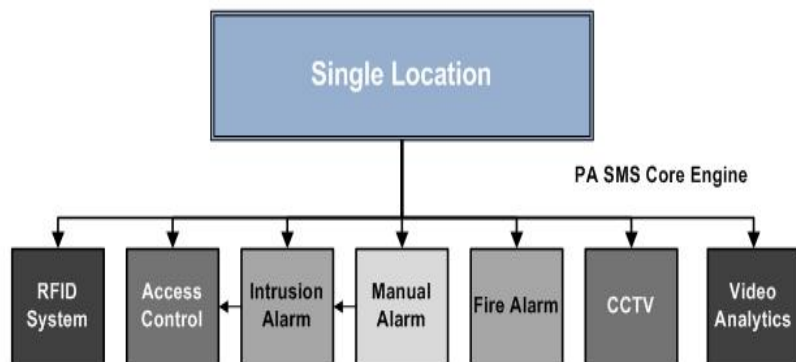
PA SMS PRODUCT DETAILS

- PA SMS is available in three editions
 - PA SMS Standard edition
 - *Mainly for Single Site Office*
 - PA SMS Enterprise I edition
 - *For Corporate with Multi Sites*
 - PA SMS Enterprise II edition
 - *For Corporate with Regional Offices and Multi Sites*
- *A la carte* features are also available.



PA SMS STANDARD EDITION

1. PA SMS Standard Edition (One Site only)

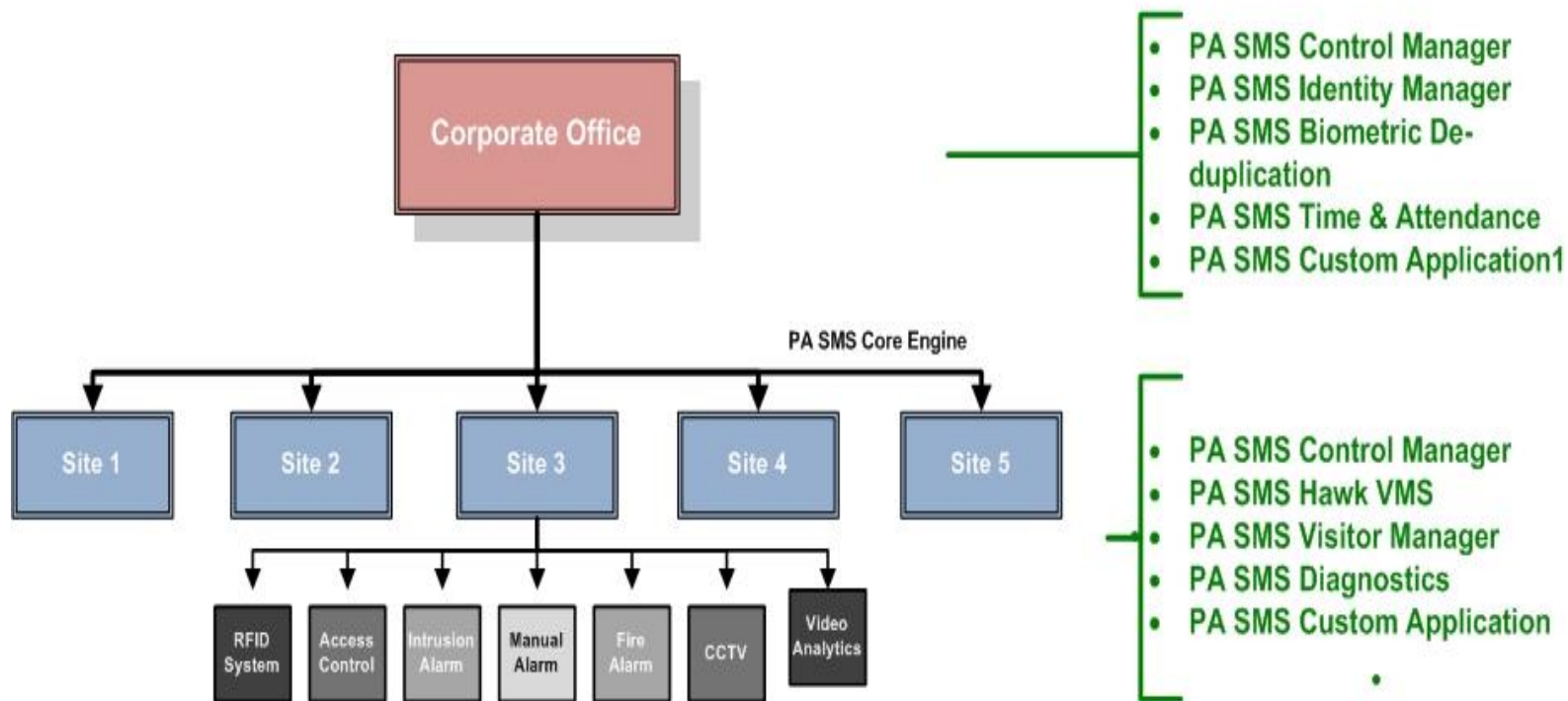


- PA SMS Control Manager
- PA SMS Hawk VMS
- PA SMS Visitor Manager
- PA SMS Diagnostics
- PA SMS Identity Manager
- PA SMS Biometric De-duplication
- PA SMS Time & Attendance
- PA SMS Custom Application



PA SMS ENTERPRISE I EDITION

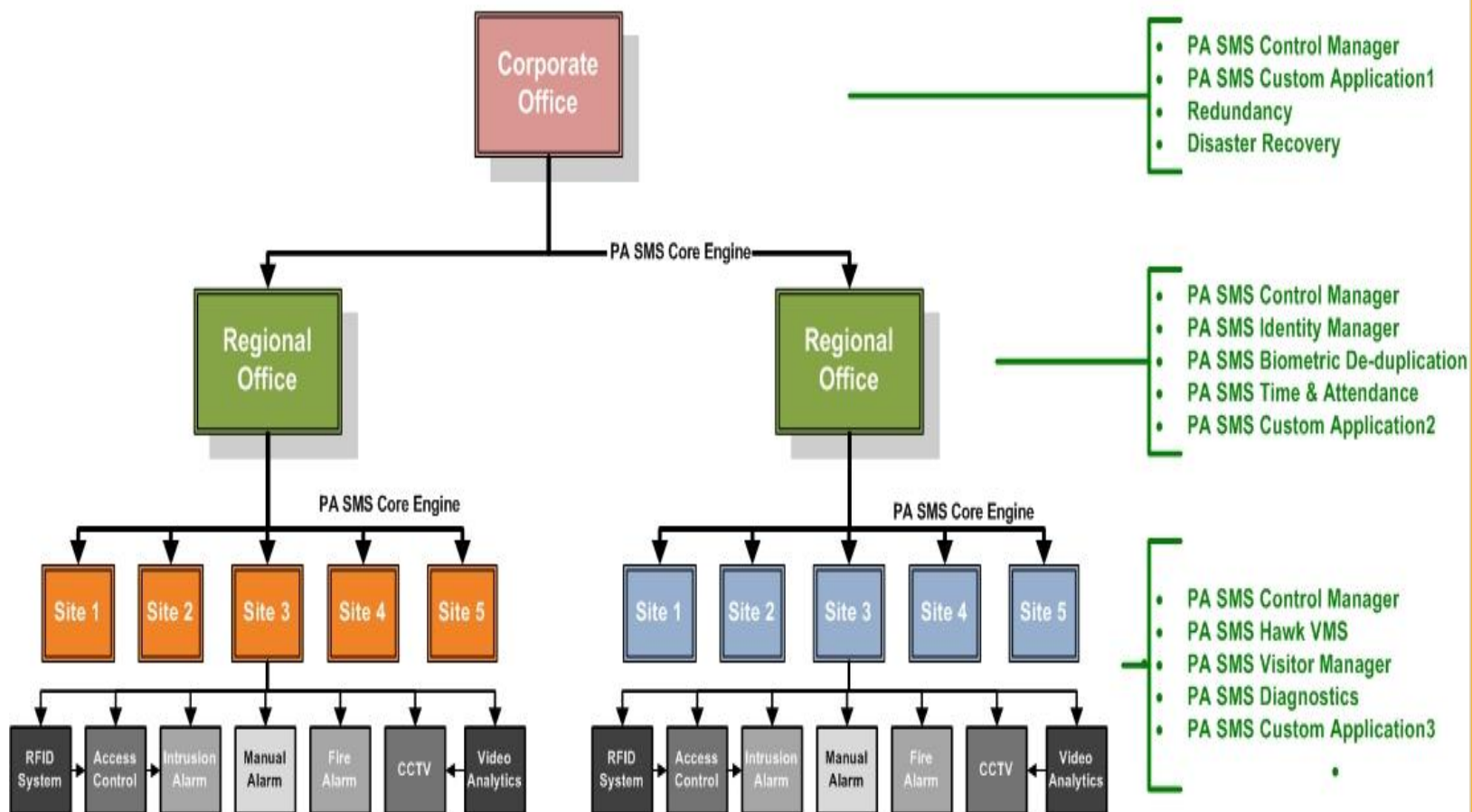
2. PA SMS Enterprise I Edition (Corporate + 5 Sites + Pay per site)

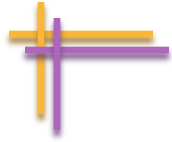




PA SMS ENTERPRISE II EDITION

3. PA SMS Enterprise II Edition (Corporate + Regional + 10 Sites + Pay per site)





For more info please mail to info@purplearrow-cs.com

Request to visit www.purplearrow-cs.com

THANK YOU